

archmodels

2005



Have you ever lost your race with time doing visualizations? Have you ever been embarrassed of unfinished renders, spending all night on the modeling process, instead of rendering? If you are an architect, and if you need to work fast but with highest precision, this is the thing for you. Archmodels volume 12 gives you more than 100 professional, highly detailed objects for architectural visualizations. This time we would like to offer you second part of lamps collection. Why waste costly time for making something that you can have from the best at Evermotion?



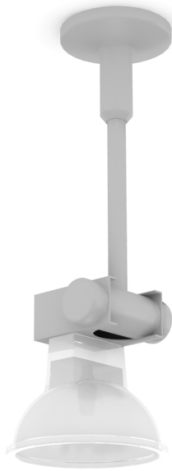
Software and models © 2005 EVERMOTION. EVERMOTION logo is trademark or registered trademark of Evermotion Inc. in the U.S. and/or other countries. All rights reserved. All *.3ds, *.obj, models included on this collection with data are an integral part of "archmodels vol.12" and the resale of this data is strictly prohibited. All models can be used for commercial purposes only by owners who bought this archmodels collection. The sharing of archmodels collection data is strictly prohibited unless that user has written authorization from EVERMOTION.

archmodels

2005



Have you ever lost your race with time doing visualizations? Have you ever been embarrassed of unfinished renders, spending all night on the modeling process, instead of rendering? If you are an architect, and if you need to work fast but with highest precision, this is the thing for you. Archmodels volume 12 gives you more than 100 professional, highly detailed objects for architectural visualizations. This time we would like to offer you second part of lamps collection. Why waste costly time for making something that you can have from the best at Evermotion?



model
001



model
002



model
003



model
004

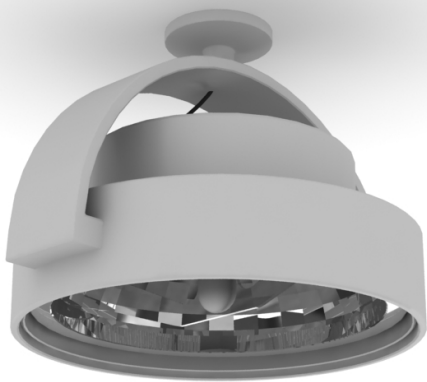
Software and models © 2005 EVERMOTION. EVERMOTION logo is trademark or registered trademark of Evermotion Inc. in the U.S. and/or other countries. All rights reserved. All *.3ds, *.obj, models included on this collection with data are an integral part of "archmodels vol.12" and the resale of this data is strictly prohibited. All models can be used for commercial purposes only by owners who bought this archmodels collection. The sharing of archmodels collection data is strictly prohibited unless that user has written authorization from EVERMOTION.

archmodels

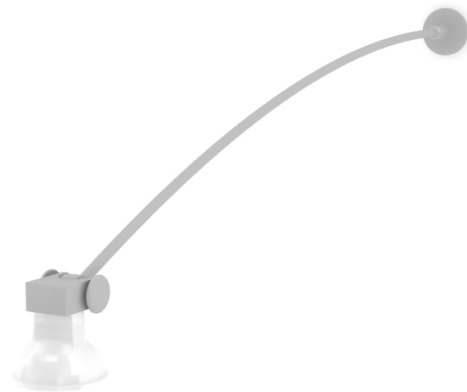
2005



Have you ever lost your race with time doing visualizations? Have you ever been embarrassed of unfinished renders, spending all night on the modeling process, instead of rendering? If you are an architect, and if you need to work fast but with highest precision, this is the thing for you. Archmodels volume 12 gives you more than 100 professional, highly detailed objects for architectural visualizations. This time we would like to offer you second part of lamps collection. Why waste costly time for making something that you can have from the best at Evermotion?



model
005



model
006



model
007



model
008

Software and models © 2005 EVERMOTION. EVERMOTION logo is trademark or registered trademark of Evermotion Inc. in the U.S. and/or other countries. All rights reserved. All *.3ds, *.obj, models included on this collection with data are an integral part of "archmodels vol.12" and the resale of this data is strictly prohibited. All models can be used for commercial purposes only by owners who bought this archmodels collection. The sharing of archmodels collection data is strictly prohibited unless that user has written authorization from EVERMOTION.

archmodels

2005



Have you ever lost your race with time doing visualizations? Have you ever been embarrassed of unfinished renders, spending all night on the modeling process, instead of rendering? If you are an architect, and if you need to work fast but with highest precision, this is the thing for you. Archmodels volume 12 gives you more than 100 professional, highly detailed objects for architectural visualizations. This time we would like to offer you second part of lamps collection. Why waste costly time for making something that you can have from the best at Evermotion?



model
009



model
010



model
011



model
012

Software and models © 2005 EVERMOTION. EVERMOTION logo is trademark or registered trademark of Evermotion Inc. in the U.S. and/or other countries. All rights reserved. All *.3ds, *.obj, models included on this collection with data are an integral part of "archmodels vol.12" and the resale of this data is strictly prohibited. All models can be used for commercial purposes only by owners who bought this archmodels collection. The sharing of archmodels collection data is strictly prohibited unless that user has written authorization from EVERMOTION.

archmodels

2005



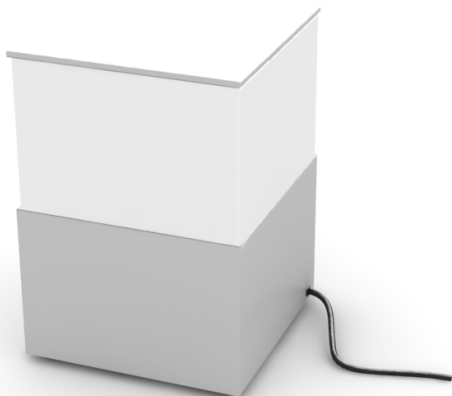
Have you ever lost your race with time doing visualizations? Have you ever been embarrassed of unfinished renders, spending all night on the modeling process, instead of rendering? If you are an architect, and if you need to work fast but with highest precision, this is the thing for you. Archmodels volume 12 gives you more than 100 professional, highly detailed objects for architectural visualizations. This time we would like to offer you second part of lamps collection. Why waste costly time for making something that you can have from the best at Evermotion?



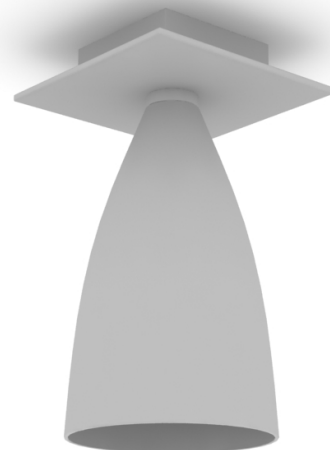
model
013



model
014



model
015



model
016

Software and models © 2005 EVERMOTION. EVERMOTION logo is trademark or registered trademark of Evermotion Inc. in the U.S. and/or other countries. All rights reserved. All *.3ds, *.obj, models included on this collection with data are an integral part of "archmodels vol.12" and the resale of this data is strictly prohibited. All models can be used for commercial purposes only by owners who bought this archmodels collection. The sharing of archmodels collection data is strictly prohibited unless that user has written authorization from EVERMOTION.

archmodels

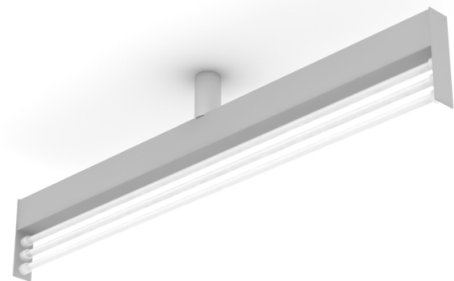
2005



Have you ever lost your race with time doing visualizations? Have you ever been embarrassed of unfinished renders, spending all night on the modeling process, instead of rendering? If you are an architect, and if you need to work fast but with highest precision, this is the thing for you. Archmodels volume 12 gives you more than 100 professional, highly detailed objects for architectural visualizations. This time we would like to offer you second part of lamps collection. Why waste costly time for making something that you can have from the best at Evermotion?



model
017



model
018



model
019



model
020

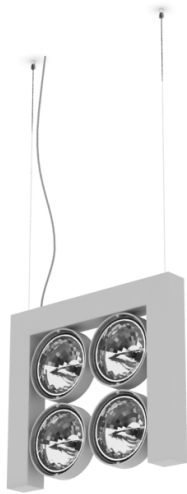
Software and models © 2005 EVERMOTION. EVERMOTION logo is trademark or registered trademark of Evermotion Inc. in the U.S. and/or other countries. All rights reserved. All *.3ds, *.obj, models included on this collection with data are an integral part of "archmodels vol.12" and the resale of this data is strictly prohibited. All models can be used for commercial purposes only by owners who bought this archmodels collection. The sharing of archmodels collection data is strictly prohibited unless that user has written authorization from EVERMOTION.

archmodels

2005



Have you ever lost your race with time doing visualizations? Have you ever been embarrassed of unfinished renders, spending all night on the modeling process, instead of rendering? If you are an architect, and if you need to work fast but with highest precision, this is the thing for you. Archmodels volume 12 gives you more than 100 professional, highly detailed objects for architectural visualizations. This time we would like to offer you second part of lamps collection. Why waste costly time for making something that you can have from the best at Evermotion?



model
021



model
022



model
023



model
024

Software and models © 2005 EVERMOTION. EVERMOTION logo is trademark or registered trademark of Evermotion Inc. in the U.S. and/or other countries. All rights reserved. All *.3ds, *.obj, models included on this collection with data are an integral part of "archmodels vol.12" and the resale of this data is strictly prohibited. All models can be used for commercial purposes only by owners who bought this archmodels collection. The sharing of archmodels collection data is strictly prohibited unless that user has written authorization from EVERMOTION.

archmodels

2005



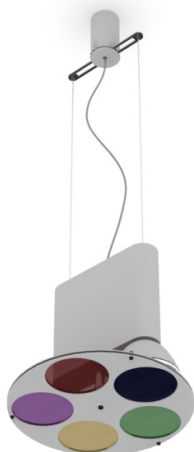
Have you ever lost your race with time doing visualizations? Have you ever been embarrassed of unfinished renders, spending all night on the modeling process, instead of rendering? If you are an architect, and if you need to work fast but with highest precision, this is the thing for you. Archmodels volume 12 gives you more than 100 professional, highly detailed objects for architectural visualizations. This time we would like to offer you second part of lamps collection. Why waste costly time for making something that you can have from the best at Evermotion?



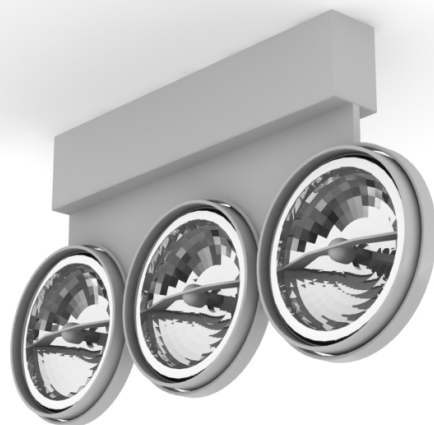
model
025



model
026



model
027



model
028

Software and models © 2005 EVERMOTION. EVERMOTION logo is trademark or registered trademark of Evermotion Inc. in the U.S. and/or other countries. All rights reserved. All *.3ds, *.obj, models included on this collection with data are an integral part of "archmodels vol.12" and the resale of this data is strictly prohibited. All models can be used for commercial purposes only by owners who bought this archmodels collection. The sharing of archmodels collection data is strictly prohibited unless that user has written authorization from EVERMOTION.

archmodels

2005



Have you ever lost your race with time doing visualizations? Have you ever been embarrassed of unfinished renders, spending all night on the modeling process, instead of rendering? If you are an architect, and if you need to work fast but with highest precision, this is the thing for you. Archmodels volume 12 gives you more than 100 professional, highly detailed objects for architectural visualizations. This time we would like to offer you second part of lamps collection. Why waste costly time for making something that you can have from the best at Evermotion?



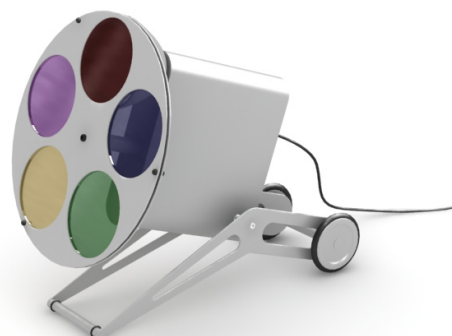
model
029



model
030



model
031



model
032

Software and models © 2005 EVERMOTION. EVERMOTION logo is trademark or registered trademark of Evermotion Inc. in the U.S. and/or other countries. All rights reserved. All *.3ds, *.obj, models included on this collection with data are an integral part of "archmodels vol.12" and the resale of this data is strictly prohibited. All models can be used for commercial purposes only by owners who bought this archmodels collection. The sharing of archmodels collection data is strictly prohibited unless that user has written authorization from EVERMOTION.

archmodels

2005



Have you ever lost your race with time doing visualizations? Have you ever been embarrassed of unfinished renders, spending all night on the modeling process, instead of rendering? If you are an architect, and if you need to work fast but with highest precision, this is the thing for you. Archmodels volume 12 gives you more than 100 professional, highly detailed objects for architectural visualizations. This time we would like to offer you second part of lamps collection. Why waste costly time for making something that you can have from the best at Evermotion?



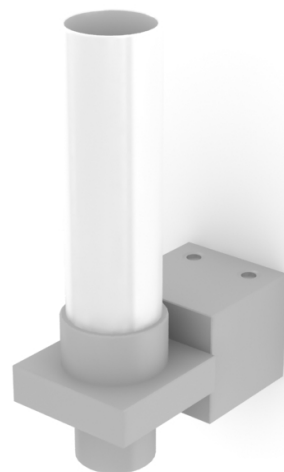
model
033



model
034



model
035



model
036

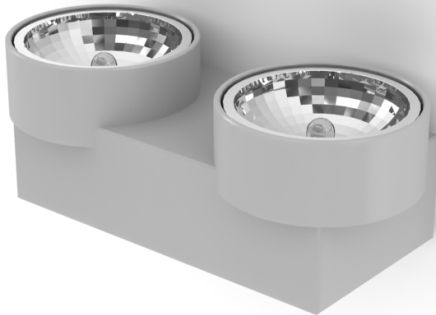
Software and models © 2005 EVERMOTION. EVERMOTION logo is trademark or registered trademark of Evermotion Inc. in the U.S. and/or other countries. All rights reserved. All *.3ds, *.obj, models included on this collection with data are an integral part of "archmodels vol.12" and the resale of this data is strictly prohibited. All models can be used for commercial purposes only by owners who bought this archmodels collection. The sharing of archmodels collection data is strictly prohibited unless that user has written authorization from EVERMOTION.

archmodels

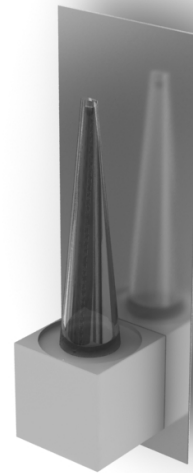
2005



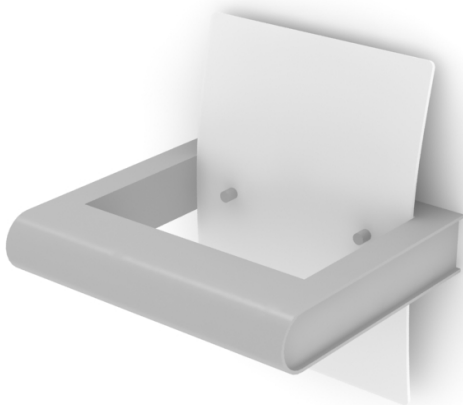
Have you ever lost your race with time doing visualizations? Have you ever been embarrassed of unfinished renders, spending all night on the modeling process, instead of rendering? If you are an architect, and if you need to work fast but with highest precision, this is the thing for you. Archmodels volume 12 gives you more than 100 professional, highly detailed objects for architectural visualizations. This time we would like to offer you second part of lamps collection. Why waste costly time for making something that you can have from the best at Evermotion?



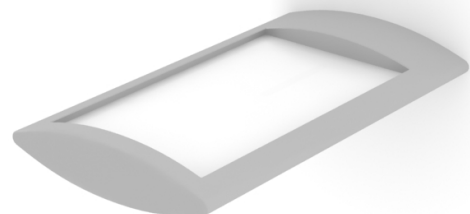
model
037



model
038



model
039



model
040

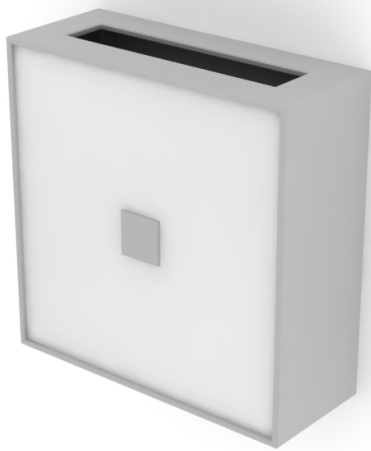
Software and models © 2005 EVERMOTION. EVERMOTION logo is trademark or registered trademark of Evermotion Inc. in the U.S. and/or other countries. All rights reserved. All *.3ds, *.obj, models included on this collection with data are an integral part of "archmodels vol.12" and the resale of this data is strictly prohibited. All models can be used for commercial purposes only by owners who bought this archmodels collection. The sharing of archmodels collection data is strictly prohibited unless that user has written authorization from EVERMOTION.

archmodels

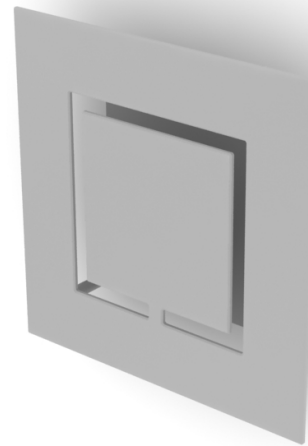
2005



Have you ever lost your race with time doing visualizations? Have you ever been embarrassed of unfinished renders, spending all night on the modeling process, instead of rendering? If you are an architect, and if you need to work fast but with highest precision, this is the thing for you. Archmodels volume 12 gives you more than 100 professional, highly detailed objects for architectural visualizations. This time we would like to offer you second part of lamps collection. Why waste costly time for making something that you can have from the best at Evermotion?



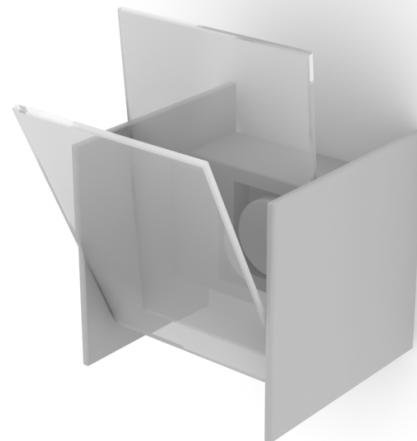
model
041



model
042



model
043



model
044

Software and models © 2005 EVERMOTION. EVERMOTION logo is trademark or registered trademark of Evermotion Inc. in the U.S. and/or other countries. All rights reserved. All *.3ds, *.obj, models included on this collection with data are an integral part of "archmodels vol.12" and the resale of this data is strictly prohibited. All models can be used for commercial purposes only by owners who bought this archmodels collection. The sharing of archmodels collection data is strictly prohibited unless that user has written authorization from EVERMOTION.

archmodels

2005



Have you ever lost your race with time doing visualizations? Have you ever been embarrassed of unfinished renders, spending all night on the modeling process, instead of rendering? If you are an architect, and if you need to work fast but with highest precision, this is the thing for you. Archmodels volume 12 gives you more than 100 professional, highly detailed objects for architectural visualizations. This time we would like to offer you second part of lamps collection. Why waste costly time for making something that you can have from the best at Evermotion?



model
045



model
046



model
047



model
048

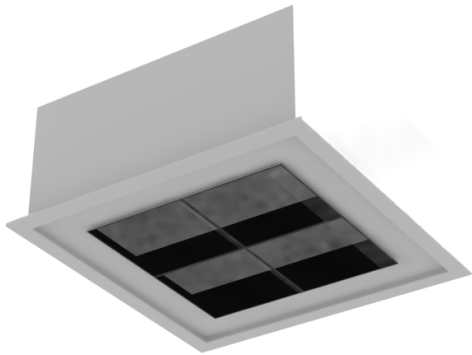
Software and models © 2005 EVERMOTION. EVERMOTION logo is trademark or registered trademark of Evermotion Inc. in the U.S. and/or other countries. All rights reserved. All *.3ds, *.obj, models included on this collection with data are an integral part of "archmodels vol.12" and the resale of this data is strictly prohibited. All models can be used for commercial purposes only by owners who bought this archmodels collection. The sharing of archmodels collection data is strictly prohibited unless that user has written authorization from EVERMOTION.

archmodels

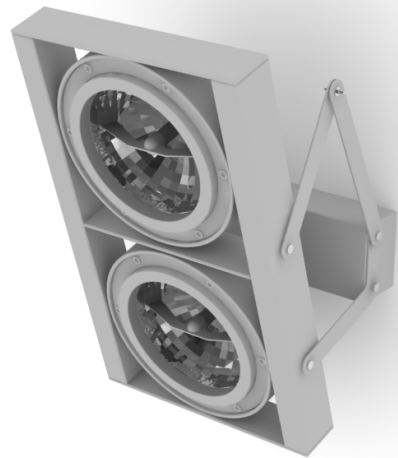
2005



Have you ever lost your race with time doing visualizations? Have you ever been embarrassed of unfinished renders, spending all night on the modeling process, instead of rendering? If you are an architect, and if you need to work fast but with highest precision, this is the thing for you. Archmodels volume 12 gives you more than 100 professional, highly detailed objects for architectural visualizations. This time we would like to offer you second part of lamps collection. Why waste costly time for making something that you can have from the best at Evermotion?



model
049



model
050



model
051



model
052

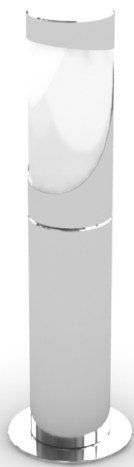
Software and models © 2005 EVERMOTION. EVERMOTION logo is trademark or registered trademark of Evermotion Inc. in the U.S. and/or other countries. All rights reserved. All *.3ds, *.obj, models included on this collection with data are an integral part of "archmodels vol.12" and the resale of this data is strictly prohibited. All models can be used for commercial purposes only by owners who bought this archmodels collection. The sharing of archmodels collection data is strictly prohibited unless that user has written authorization from EVERMOTION.

archmodels

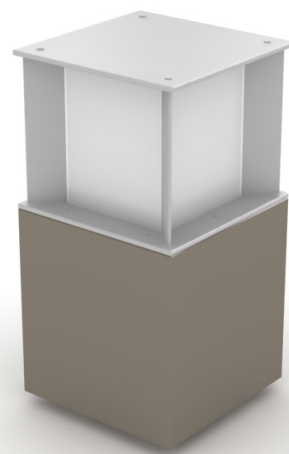
2005



Have you ever lost your race with time doing visualizations? Have you ever been embarrassed of unfinished renders, spending all night on the modeling process, instead of rendering? If you are an architect, and if you need to work fast but with highest precision, this is the thing for you. Archmodels volume 12 gives you more than 100 professional, highly detailed objects for architectural visualizations. This time we would like to offer you second part of lamps collection. Why waste costly time for making something that you can have from the best at Evermotion?



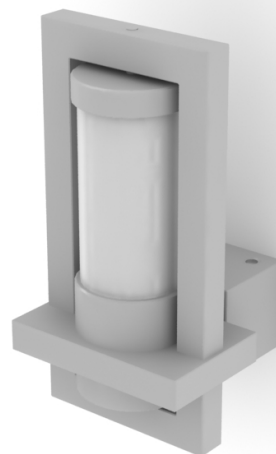
model
053



model
054



model
055



model
056

Software and models © 2005 EVERMOTION. EVERMOTION logo is trademark or registered trademark of Evermotion Inc. in the U.S. and/or other countries. All rights reserved. All *.3ds, *.obj, models included on this collection with data are an integral part of "archmodels vol.12" and the resale of this data is strictly prohibited. All models can be used for commercial purposes only by owners who bought this archmodels collection. The sharing of archmodels collection data is strictly prohibited unless that user has written authorization from EVERMOTION.

archmodels

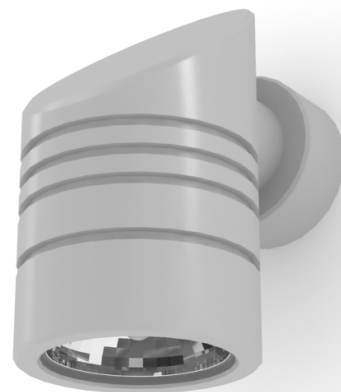
2005



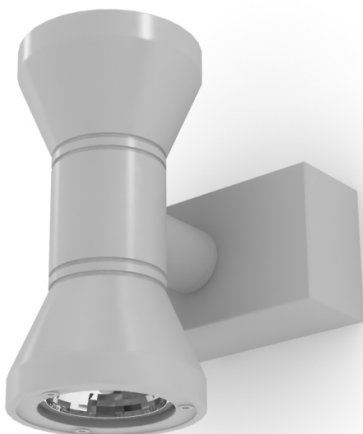
Have you ever lost your race with time doing visualizations? Have you ever been embarrassed of unfinished renders, spending all night on the modeling process, instead of rendering? If you are an architect, and if you need to work fast but with highest precision, this is the thing for you. Archmodels volume 12 gives you more than 100 professional, highly detailed objects for architectural visualizations. This time we would like to offer you second part of lamps collection. Why waste costly time for making something that you can have from the best at Evermotion?



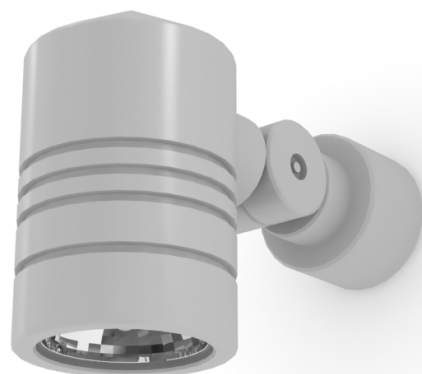
model
057



model
058



model
059



model
060

Software and models © 2005 EVERMOTION. EVERMOTION logo is trademark or registered trademark of Evermotion Inc. in the U.S. and/or other countries. All rights reserved. All *.3ds, *.obj, models included on this collection with data are an integral part of "archmodels vol.12" and the resale of this data is strictly prohibited. All models can be used for commercial purposes only by owners who bought this archmodels collection. The sharing of archmodels collection data is strictly prohibited unless that user has written authorization from EVERMOTION.

archmodels

2005



Have you ever lost your race with time doing visualizations? Have you ever been embarrassed of unfinished renders, spending all night on the modeling process, instead of rendering? If you are an architect, and if you need to work fast but with highest precision, this is the thing for you. Archmodels volume 12 gives you more than 100 professional, highly detailed objects for architectural visualizations. This time we would like to offer you second part of lamps collection. Why waste costly time for making something that you can have from the best at Evermotion?



model
061



model
062



model
063



model
064

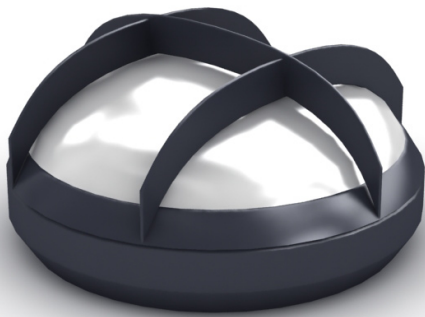
Software and models © 2005 EVERMOTION. EVERMOTION logo is trademark or registered trademark of Evermotion Inc. in the U.S. and/or other countries. All rights reserved. All *.3ds, *.obj, models included on this collection with data are an integral part of "archmodels vol.12" and the resale of this data is strictly prohibited. All models can be used for commercial purposes only by owners who bought this archmodels collection. The sharing of archmodels collection data is strictly prohibited unless that user has written authorization from EVERMOTION.

archmodels

2005



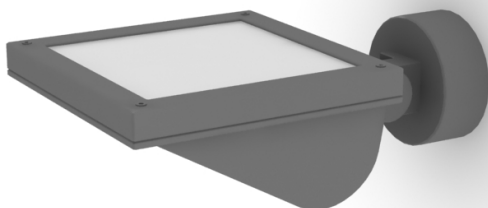
Have you ever lost your race with time doing visualizations? Have you ever been embarrassed of unfinished renders, spending all night on the modeling process, instead of rendering? If you are an architect, and if you need to work fast but with highest precision, this is the thing for you. Archmodels volume 12 gives you more than 100 professional, highly detailed objects for architectural visualizations. This time we would like to offer you second part of lamps collection. Why waste costly time for making something that you can have from the best at Evermotion?



model
065



model
066



model
067



model
068

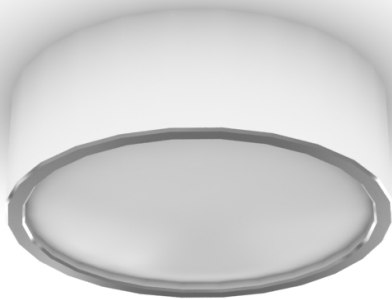
Software and models © 2005 EVERMOTION. EVERMOTION logo is trademark or registered trademark of Evermotion Inc. in the U.S. and/or other countries. All rights reserved. All *.3ds, *.obj, models included on this collection with data are an integral part of "archmodels vol.12" and the resale of this data is strictly prohibited. All models can be used for commercial purposes only by owners who bought this archmodels collection. The sharing of archmodels collection data is strictly prohibited unless that user has written authorization from EVERMOTION.

archmodels

2005



Have you ever lost your race with time doing visualizations? Have you ever been embarrassed of unfinished renders, spending all night on the modeling process, instead of rendering? If you are an architect, and if you need to work fast but with highest precision, this is the thing for you. Archmodels volume 12 gives you more than 100 professional, highly detailed objects for architectural visualizations. This time we would like to offer you second part of lamps collection. Why waste costly time for making something that you can have from the best at Evermotion?



model
069



model
070



model
071



model
072

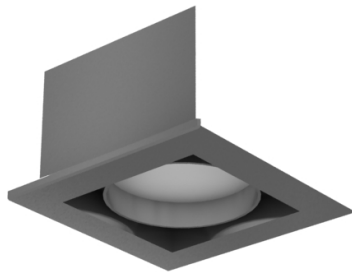
Software and models © 2005 EVERMOTION. EVERMOTION logo is trademark or registered trademark of Evermotion Inc. in the U.S. and/or other countries. All rights reserved. All *.3ds, *.obj, models included on this collection with data are an integral part of "archmodels vol.12" and the resale of this data is strictly prohibited. All models can be used for commercial purposes only by owners who bought this archmodels collection. The sharing of archmodels collection data is strictly prohibited unless that user has written authorization from EVERMOTION.

archmodels

2005



Have you ever lost your race with time doing visualizations? Have you ever been embarrassed of unfinished renders, spending all night on the modeling process, instead of rendering? If you are an architect, and if you need to work fast but with highest precision, this is the thing for you. Archmodels volume 12 gives you more than 100 professional, highly detailed objects for architectural visualizations. This time we would like to offer you second part of lamps collection. Why waste costly time for making something that you can have from the best at Evermotion?



model
073



model
074



model
075



model
076

Software and models © 2005 EVERMOTION. EVERMOTION logo is trademark or registered trademark of Evermotion Inc. in the U.S. and/or other countries. All rights reserved. All *.3ds, *.obj, models included on this collection with data are an integral part of "archmodels vol.12" and the resale of this data is strictly prohibited. All models can be used for commercial purposes only by owners who bought this archmodels collection. The sharing of archmodels collection data is strictly prohibited unless that user has written authorization from EVERMOTION.

archmodels

2005



Have you ever lost your race with time doing visualizations? Have you ever been embarrassed of unfinished renders, spending all night on the modeling process, instead of rendering? If you are an architect, and if you need to work fast but with highest precision, this is the thing for you. Archmodels volume 12 gives you more than 100 professional, highly detailed objects for architectural visualizations. This time we would like to offer you second part of lamps collection. Why waste costly time for making something that you can have from the best at Evermotion?



model
077



model
078



model
079



model
080

Software and models © 2005 EVERMOTION. EVERMOTION logo is trademark or registered trademark of Evermotion Inc. in the U.S. and/or other countries. All rights reserved. All *.3ds, *.obj, models included on this collection with data are an integral part of "archmodels vol.12" and the resale of this data is strictly prohibited. All models can be used for commercial purposes only by owners who bought this archmodels collection. The sharing of archmodels collection data is strictly prohibited unless that user has written authorization from EVERMOTION.

archmodels

2005



Have you ever lost your race with time doing visualizations? Have you ever been embarrassed of unfinished renders, spending all night on the modeling process, instead of rendering? If you are an architect, and if you need to work fast but with highest precision, this is the thing for you. Archmodels volume 12 gives you more than 100 professional, highly detailed objects for architectural visualizations. This time we would like to offer you second part of lamps collection. Why waste costly time for making something that you can have from the best at Evermotion?



model
081



model
082



model
083



model
084

Software and models © 2005 EVERMOTION. EVERMOTION logo is trademark or registered trademark of Evermotion Inc. in the U.S. and/or other countries. All rights reserved. All *.3ds, *.obj, models included on this collection with data are an integral part of "archmodels vol.12" and the resale of this data is strictly prohibited. All models can be used for commercial purposes only by owners who bought this archmodels collection. The sharing of archmodels collection data is strictly prohibited unless that user has written authorization from EVERMOTION.

archmodels

2005



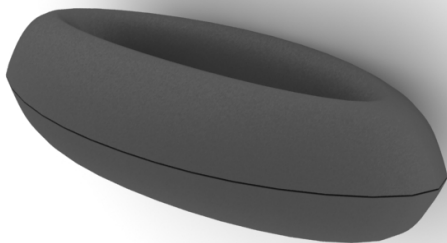
Have you ever lost your race with time doing visualizations? Have you ever been embarrassed of unfinished renders, spending all night on the modeling process, instead of rendering? If you are an architect, and if you need to work fast but with highest precision, this is the thing for you. Archmodels volume 12 gives you more than 100 professional, highly detailed objects for architectural visualizations. This time we would like to offer you second part of lamps collection. Why waste costly time for making something that you can have from the best at Evermotion?



model
085



model
086



model
087



model
088

Software and models © 2005 EVERMOTION. EVERMOTION logo is trademark or registered trademark of Evermotion Inc. in the U.S. and/or other countries. All rights reserved. All *.3ds, *.obj, models included on this collection with data are an integral part of "archmodels vol.12" and the resale of this data is strictly prohibited. All models can be used for commercial purposes only by owners who bought this archmodels collection. The sharing of archmodels collection data is strictly prohibited unless that user has written authorization from EVERMOTION.

archmodels

2005



Have you ever lost your race with time doing visualizations? Have you ever been embarrassed of unfinished renders, spending all night on the modeling process, instead of rendering? If you are an architect, and if you need to work fast but with highest precision, this is the thing for you. Archmodels volume 12 gives you more than 100 professional, highly detailed objects for architectural visualizations. This time we would like to offer you second part of lamps collection. Why waste costly time for making something that you can have from the best at Evermotion?



model
089



model
090



model
091



model
092

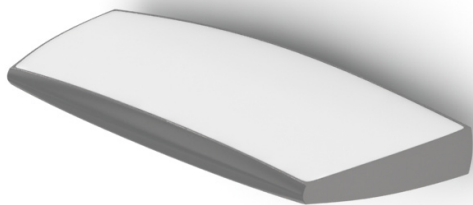
Software and models © 2005 EVERMOTION. EVERMOTION logo is trademark or registered trademark of Evermotion Inc. in the U.S. and/or other countries. All rights reserved. All *.3ds, *.obj, models included on this collection with data are an integral part of "archmodels vol.12" and the resale of this data is strictly prohibited. All models can be used for commercial purposes only by owners who bought this archmodels collection. The sharing of archmodels collection data is strictly prohibited unless that user has written authorization from EVERMOTION.

archmodels

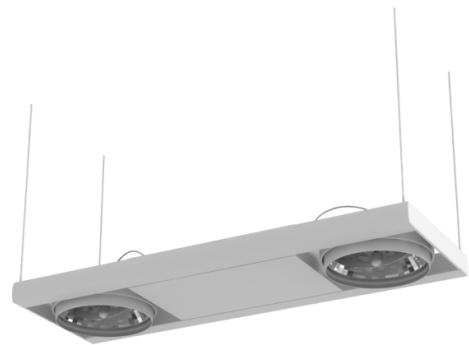
2005



Have you ever lost your race with time doing visualizations? Have you ever been embarrassed of unfinished renders, spending all night on the modeling process, instead of rendering? If you are an architect, and if you need to work fast but with highest precision, this is the thing for you. Archmodels volume 12 gives you more than 100 professional, highly detailed objects for architectural visualizations. This time we would like to offer you second part of lamps collection. Why waste costly time for making something that you can have from the best at Evermotion?



model
093



model
094



model
095



model
096

Software and models © 2005 EVERMOTION. EVERMOTION logo is trademark or registered trademark of Evermotion Inc. in the U.S. and/or other countries. All rights reserved. All *.3ds, *.obj, models included on this collection with data are an integral part of "archmodels vol.12" and the resale of this data is strictly prohibited. All models can be used for commercial purposes only by owners who bought this archmodels collection. The sharing of archmodels collection data is strictly prohibited unless that user has written authorization from EVERMOTION.

archmodels

2005



Have you ever lost your race with time doing visualizations? Have you ever been embarrassed of unfinished renders, spending all night on the modeling process, instead of rendering? If you are an architect, and if you need to work fast but with highest precision, this is the thing for you. Archmodels volume 12 gives you more than 100 professional, highly detailed objects for architectural visualizations. This time we would like to offer you second part of lamps collection. Why waste costly time for making something that you can have from the best at Evermotion?



model
097



model
098



model
099



model
100

Software and models © 2005 EVERMOTION. EVERMOTION logo is trademark or registered trademark of Evermotion Inc. in the U.S. and/or other countries. All rights reserved. All *.3ds, *.obj, models included on this collection with data are an integral part of "archmodels vol.12" and the resale of this data is strictly prohibited. All models can be used for commercial purposes only by owners who bought this archmodels collection. The sharing of archmodels collection data is strictly prohibited unless that user has written authorization from EVERMOTION.

archmodels

2005



Have you ever lost your race with time doing visualizations? Have you ever been embarrassed of unfinished renders, spending all night on the modeling process, instead of rendering? If you are an architect, and if you need to work fast but with highest precision, this is the thing for you. Archmodels volume 12 gives you more than 100 professional, highly detailed objects for architectural visualizations. This time we would like to offer you second part of lamps collection. Why waste costly time for making something that you can have from the best at Evermotion?



model
101



model
102



model
103



model
104

Software and models © 2005 EVERMOTION. EVERMOTION logo is trademark or registered trademark of Evermotion Inc. in the U.S. and/or other countries. All rights reserved. All *.3ds, *.obj, models included on this collection with data are an integral part of "archmodels vol.12" and the resale of this data is strictly prohibited. All models can be used for commercial purposes only by owners who bought this archmodels collection. The sharing of archmodels collection data is strictly prohibited unless that user has written authorization from EVERMOTION.

archmodels

2005



Have you ever lost your race with time doing visualizations? Have you ever been embarrassed of unfinished renders, spending all night on the modeling process, instead of rendering? If you are an architect, and if you need to work fast but with highest precision, this is the thing for you. Archmodels volume 12 gives you more than 100 professional, highly detailed objects for architectural visualizations. This time we would like to offer you second part of lamps collection. Why waste costly time for making something that you can have from the best at Evermotion?



model
105



model
106



model
107



model
108

Software and models © 2005 EVERMOTION. EVERMOTION logo is trademark or registered trademark of Evermotion Inc. in the U.S. and/or other countries. All rights reserved. All *.3ds, *.obj, models included on this collection with data are an integral part of "archmodels vol.12" and the resale of this data is strictly prohibited. All models can be used for commercial purposes only by owners who bought this archmodels collection. The sharing of archmodels collection data is strictly prohibited unless that user has written authorization from EVERMOTION.

archmodels

2005



Have you ever lost your race with time doing visualizations? Have you ever been embarrassed of unfinished renders, spending all night on the modeling process, instead of rendering? If you are an architect, and if you need to work fast but with highest precision, this is the thing for you. Archmodels volume 12 gives you more than 100 professional, highly detailed objects for architectural visualizations. This time we would like to offer you second part of lamps collection. Why waste costly time for making something that you can have from the best at Evermotion?



model
109



model
110



model
111



model
112

Software and models © 2005 EVERMOTION. EVERMOTION logo is trademark or registered trademark of Evermotion Inc. in the U.S. and/or other countries. All rights reserved. All *.3ds, *.obj, models included on this collection with data are an integral part of "archmodels vol.12" and the resale of this data is strictly prohibited. All models can be used for commercial purposes only by owners who bought this archmodels collection. The sharing of archmodels collection data is strictly prohibited unless that user has written authorization from EVERMOTION.

archmodels

2005



Have you ever lost your race with time doing visualizations? Have you ever been embarrassed of unfinished renders, spending all night on the modeling process, instead of rendering? If you are an architect, and if you need to work fast but with highest precision, this is the thing for you. Archmodels volume 12 gives you more than 100 professional, highly detailed objects for architectural visualizations. This time we would like to offer you second part of lamps collection. Why waste costly time for making something that you can have from the best at Evermotion?



model
113



model
114



model
115

Software and models © 2005 EVERMOTION. EVERMOTION logo is trademark or registered trademark of Evermotion Inc. in the U.S. and/or other countries. All rights reserved. All *.3ds, *.obj, models included on this collection with data are an integral part of "archmodels vol.12" and the resale of this data is strictly prohibited. All models can be used for commercial purposes only by owners who bought this archmodels collection. The sharing of archmodels collection data is strictly prohibited unless that user has written authorization from EVERMOTION.